



Iowa Ag News – Cattle on Feed

Iowa Field Office · 210 Walnut Street Ste 833 · Des Moines IA 50309 · (515) 284-4340 · (800) 772-0825
fax (515) 284-4342 or (800) 719-1794 · www.nass.usda.gov/ia

Cooperating with the Iowa Department of Agriculture and Land Stewardship

July 19, 2013

Media Contact: Greg Thessen

Cattle on Feed

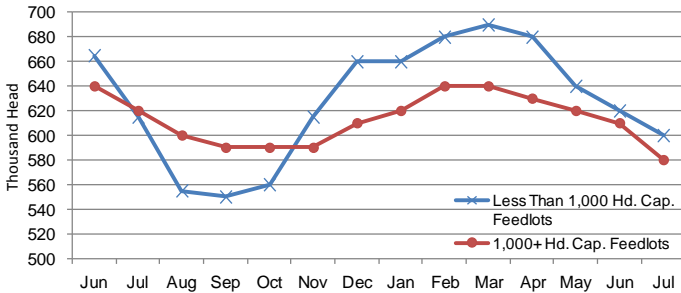
Cattle and calves on feed for slaughter market in Iowa for all feedlots totaled 1,180,000 on July 1, 2013 according to the USDA, National Agricultural Statistics Service, Iowa Field Office. The inventory is down 4 percent from June 1, 2013 and down 4 percent from July 1, 2012. Feedlots with a capacity greater than 1,000 head had 580,000 head on feed, down 5 percent from last month and down 6 percent from last year. Feedlots with a capacity less than 1,000 head had 600,000 head on feed, down 3 percent from last month and down 2 percent from last year.

Placements during June totaled 122,000 head, an increase of 17 percent from last month and up 1 percent from last year. Feedlots with a capacity greater than 1,000 head

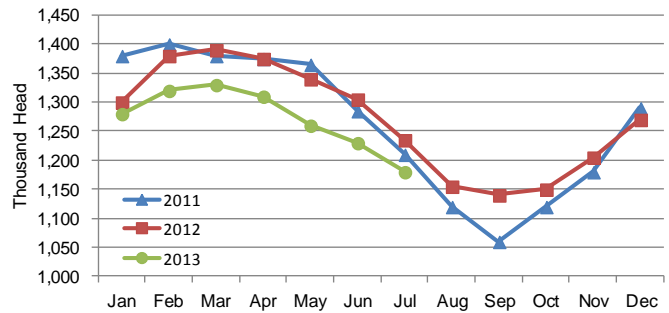
placed 47,000 head, down 28 percent from last month and down 23 percent from last year. Feedlots with a capacity less than 1,000 head placed 75,000 head. This is up 92 percent from last month and up 25 percent from last year.

Marketings for June were 166,000 head, up 29 percent from last month but down 9 percent from last year. Feedlots with a capacity greater than 1,000 head marketed 75,000 head, up 4 percent from last month but down 3 percent from last year. Feedlots with a capacity less than 1,000 head marketed 91,000 head, up 60 percent from last month but down 13 percent from last year. Other disappearance totaled 6,000 head.

Cattle on Feed, Inventory by Feedlot Capacity, Iowa: Current Month & Past 12 Months



Cattle on Feed, Inventory on all Feedlots, Iowa: 2011-2013



All Cattle on Feed, Iowa

Item	Lots 1,000+ Head	Lots Less than 1,000 Head	All Lots
	(1,000 Head)	(1,000 Head)	(1,000 Head)
Cattle on Feed, June 1, 2013	610	620	1,230
June Placements	47	75	122
June Marketings	75	91	166
June Other Disappearance	2	4	6
Cattle on Feed, July 1, 2013	580	600	1,180

Cattle on Feed: Number on Feed, Placements, Marketings, and Other Disappearance by Month, 1,000+ Capacity Feedlots

[Cattle and calves on feed are animals for slaughter market being fed a ration of grain or other concentrates and are expected to produce a carcass that will grade select or better.]

State	Cattle on Feed July 1			Placements during June			Marketings during June			June Disappearance other than Slaughter ¹		
	2012	2013	'13 as % of '12	2012	2013	'13 as % of '12	2012	2013	'13 as % of '12	2012	2013	'13 as % of '12
	(1,000 Head)	(1,000 Head)	(Percent)	(1,000 Head)	(1,000 Head)	(Percent)	(1,000 Head)	(1,000 Head)	(Percent)	(1,000 Head)	(1,000 Head)	(Percent)
Arizona	279	267	96	28	23	82	30	27	90	1	1	100
California	480	515	107	49	61	124	56	53	95	3	3	100
Colorado	970	920	95	125	120	96	170	150	88	5	10	200
Idaho	200	195	98	34	36	106	43	45	105	1	1	100
Iowa	620	580	94	61	47	77	77	75	97	4	2	50
Kansas	2,050	2,010	98	390	355	91	415	395	95	15	10	67
Nebraska	2,270	2,180	96	385	350	91	465	480	103	10	10	100
Oklahoma	320	305	95	53	49	92	51	53	104	2	1	50
South Dakota ..	210	200	95	28	27	96	47	41	87	1	1	100
Texas	2,670	2,560	96	420	425	101	500	480	96	20	15	75
Washington	210	203	97	36	39	108	45	48	107	1	2	200
Other States	431	433	100	55	55	100	66	48	73	3	7	233
United States ..	10,710	10,368	97	1,664	1,587	95	1,965	1,895	96	66	63	95

¹ Includes death loss, movement from feedlots to pasture, and shipments to other feedlots for further feeding.

Cattle on Feed: Number on Feed by Class, 1,000+ Capacity Feedlots by Quarter, State, and United States, 2012-2013

State	Steers & Steer Calves			Heifers & Heifer Calves			Cows & Bulls		
	July 1, 2012	April 1, 2013	July 1, 2013	July 1, 2012	April 1, 2013	July 1, 2013	July 1, 2012	April 1, 2013	July 1, 2013
	(1,000 Head)	(1,000 Head)	(1,000 Head)	(1,000 Head)	(1,000 Head)	(1,000 Head)	(1,000 Head)	(1,000 Head)	(1,000 Head)
Arizona	265	271	262	14	7	5	0	0	0
California	415	420	445	64	59	68	1	1	2
Colorado	645	610	590	320	365	325	5	5	5
Idaho	127	122	102	69	91	92	4	2	1
Iowa	445	430	430	175	200	150	0	0	0
Kansas	1,070	1,160	1,070	975	925	930	5	5	10
Nebraska	1,360	1,530	1,355	890	860	810	20	30	15
Oklahoma	200	195	200	120	110	105	0	0	0
South Dakota ..	121	123	105	71	91	71	18	16	24
Texas	1,630	1,600	1,560	1,039	989	999	1	1	1
Washington	133	144	104	76	86	96	1	3	3
Other States ...	325	309	304	105	147	128	1	2	1
United States ..	6,736	6,914	6,527	3,918	3,930	3,779	56	65	62

United States Cattle on Feed

Cattle and calves on feed for slaughter market in the United States for feedlots with capacity of 1,000 or more head totaled 10.4 million head on July 1, 2013. The inventory was 3 percent below July 1, 2012. The inventory included 6.53 million steers and steer calves, down 3 percent from the previous year. This group accounted for 63 percent of the total inventory. Heifers and heifer calves accounted for 3.78 million head, down 4 percent from 2012.

Placements in feedlots during June totaled 1.59 million, 5 percent below 2012. Net placements were 1.52 million head. During June, placements of cattle and calves weighing less than 600 pounds were 315,000, 600-699 pounds were 232,000, 700-799 pounds were 415,000, and 800 pounds and greater were 625,000.

Marketings of fed cattle during June totaled 1.90 million, 4 percent below 2012. Marketings for the month of June are the lowest since the series began in 1996.

Other disappearance totaled 63,000 during June, 5 percent below 2012.